



North Tyneside  
Clinical Commissioning Group

# Primary Care Networks North Tyneside

Adult Social care, Health and  
Wellbeing Sub-committee  
Thursday 5 September 2019

Dr Ruth Evans, Medical Director



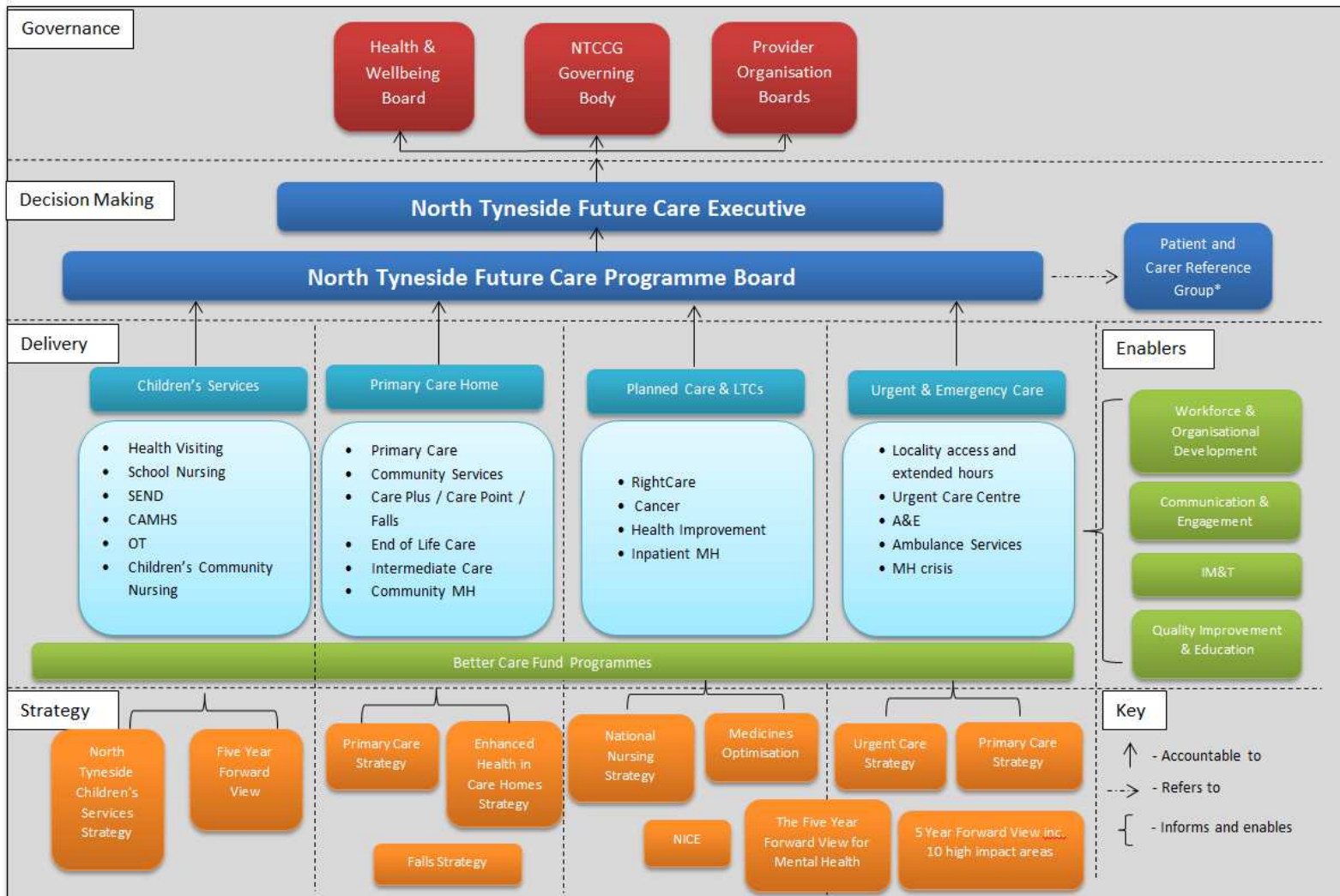
Working together to maximise the health and wellbeing of North Tyneside communities by making the best use of resources.

## Primary Care Networks

- NHS North Tyneside place based: Future Care
- Locality journey so far
- Primary Care Networks in North Tyneside
- How they fit with our vision of Primary Care Home
- How all this will benefit patients



# North Tyneside place based working



Working together to maximise the health and wellbeing of North Tyneside communities by making the best use of resources.

# North Tyneside

## Place Based: *Future Care*

- Providers working together (*Northumbria, NTW, Newcastle, primary care, community services, third sector, local authority*)
- Strengthening primary/ community services
- Hospital by Exception



# Primary Care Networks

- North Tyneside place based: Future Care
- **Locality journey so far**
- Primary Care Networks in North Tyneside
- How they fit with our vision of Primary Care Home
- How all this will benefit patients



# North Tyneside

26 GP Practices

4 Established GP Localities



North Tyneside  
Commissioning Group

## North West

- 24% of population
- 64% access NUTH
- Less deprived (IMD 20.1)
- Higher life expectancy

## Wallsend

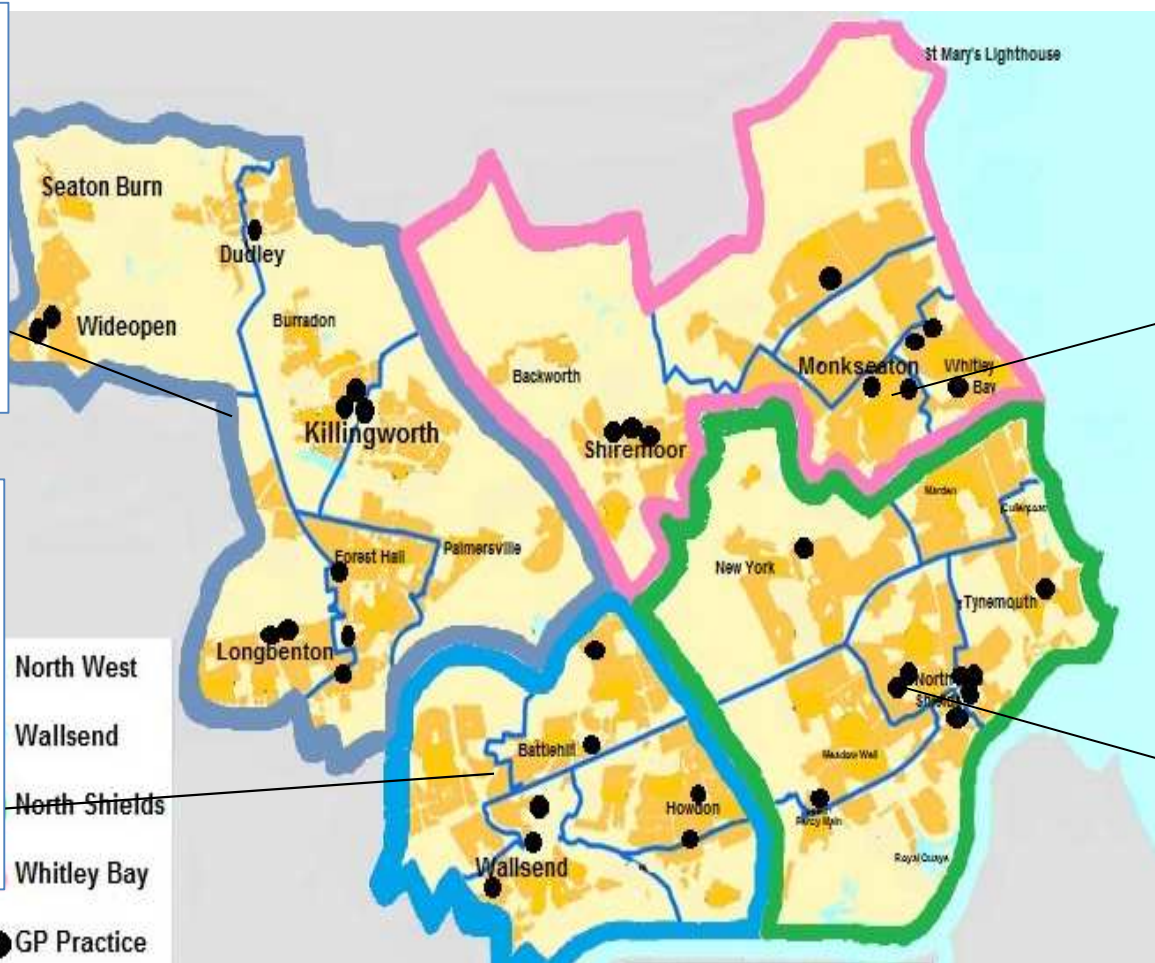
- 22% of population
- 63% access NHCFT
- More deprived (IMD 27.4)
- Lower life expectancy

## Whitley Bay

- 28% of population
- 78% access NHCFT
- Least deprived (IMD 14.4)
- Highest life expectancy

## North Shields

- 26% of population
- 75% access NHCFT
- Most deprived (IMD 28.4)
- Lowest life expectancy



Working together to maximise the health and wellbeing of North Tyneside communities by making the best use of resources.



**North Tyneside**  
Clinical Commissioning Group

**On 7 January 2019, the ' NHS long-term plan' was published  
setting out key ambitions for the NHS over the next 10 years.**



Working together to maximise the health and wellbeing of North Tyneside communities by making the best use of resources.

1.9. The **£4.5 billion** of new investment will fund expanded community multidisciplinary teams aligned with new **primary care networks** based on neighbouring GP practices that work together typically covering 30-50,000 people.

NHS Long Term Plan 2019, Page 14





# What are Primary Care Networks? (PCNs)

- Groups of Practices commissioned to provide primary care services at scale
- 30-50,000 patients
- Delivered and Funded via a DES Direct Enhanced Service (*contract between the CCG and the Network*)



# Network Contract DES

- Offered to all practices as an extension of their core GP contract and live from 1<sup>st</sup> July 2019
- ***Network Agreement:*** governance, financial structure, roles and responsibilities of each practice.
- ***DES Specification:*** outlines the full requirements of the Direct Enhanced Service.



# What will Primary Care Networks do?

2019/20 there are 3 areas for the DES:

## 1. Access

*July 2019 Extended Access*

## 2. Clinical Pharmacy

*Additional WTE in each network to work across practices*

## 3. Social prescribing

*Building on experience of previous schemes*



# Primary Care Network Workforce

- Network Director
- Administration support staff
- Additional Roles:

2019/20 – *Social Prescribing Link workers*

2019/20 – *Clinical Pharmacists*

2020/21 – *First Contact Physiotherapists*

2020/21 – *Physicians Associates*

2021/22 – *First contact community paramedics (TBC)*



# Primary Care Networks

- North Tyneside place based: Future Care
- Locality journey so far
- **Primary Care Networks in North Tyneside**
- How they fit with our vision of Primary Care Home
- How all this will benefit patients

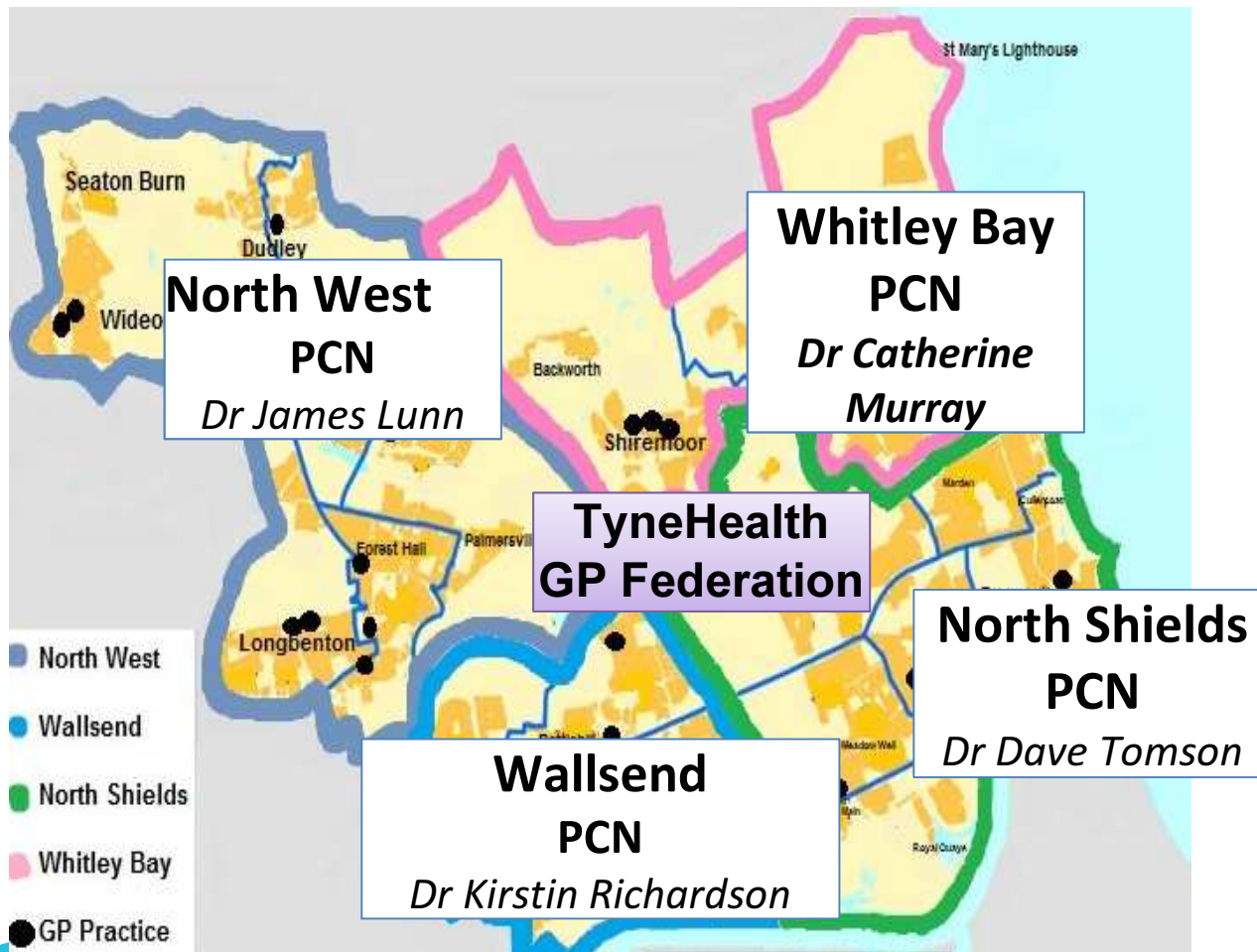


## We asked our GPs about PCNs

- Current Locality Footprint?
- PCN Director Role?
- Delivery Mechanism for the Network?



# 4 Primary Care Networks North Tyneside



## Where are we now?

Each of our 4 Primary Care Networks :

- is based on its historic locality footprint (*2 exceptions*)
- meets national requirements for size and format
- has identified a Network Director
- has signed the Mandatory Network Agreement
- has submitted the Registration Documents

This means that 100% of NT patients are registered with a practice in a Primary Care Network.





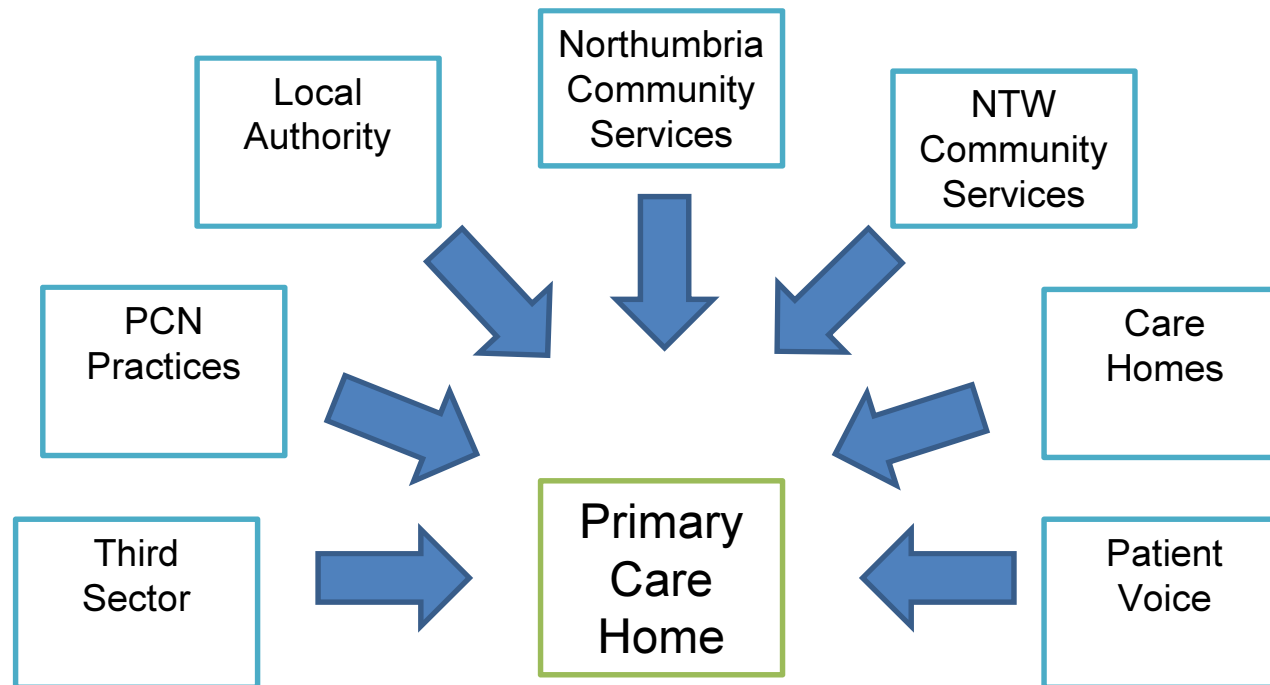
## Primary Care Networks

- NHS North Tyneside place based: Future Care
- Locality journey so far
- Primary Care Networks in North Tyneside
- **How they fit with our vision of Primary Care Home**
- How all this will benefit patients



# Primary Care Home

- Primary Care Home brings PCNs together with other providers to co-produce primary care and community services for their local population*



## Primary Care Networks

- NHS North Tyneside place based: Future Care
- Locality journey so far
- Primary Care Networks in North Tyneside
- How they fit with our vision of Primary Care Home
- **How all this will benefit patients**



## Benefits for Patients?

- Better access to NHS services: GP access, management of ongoing illness, specialist care closer to home
- More joined up care: *GP practices, community services, hospital specialists, social care, third sector*
- More health promotion/ self care
- Hospital by exception



# Primary Care Networks

Questions/ comments/ ideas?

